
HEAD OFFICE

6, Pangyo-ro 319beon-gil, Bundang-gu, Seongnam-si,
Gyeonggi-do, 13488 Rep. of KOREA
Tel: +82.70.7147.8753
Fax: +82.31.8018.3740
Hanwha-Security.com

Hanwha Techwin America

500 Frank W. Burr Blvd. Suite 43 Teaneck, NJ 07666
Toll Free: +1.877.213.1222
Direct: +1.201.325.6920
Fax: +1.201.373.0124
HanwhaSecurity.com

Hanwha Techwin Europe

Heriot House, Heriot Road, Chertsey, Surrey, KT16 9DT, United Kingdom
Tel: +44.1372.235663
Fax: +44.1932.578101
Hanwha-Security.eu

Hanwha Techwin Tianjin

Room 3F2C302, microelectronics investment service center,
no.1 qianxuesen road, microelectronics industrial park,
tianjin economic and technological development area, China
Tel: +86-22-2388-7788 (8700)
Hanwha-Security.com

Hanwha Techwin Middle East FZE

JAFZA View 18, 20th floor, office 2001, 2002, 2003,
Downtown Jebel Ali, Dubai, United Arab Emirates
Hanwha-Security.com

Hanwha Techwin Singapore Branch

4 Shenton Way, #15-06, SGX Centre 2, Singapore, 068807
Tel: +65.6221.7512
Fax: +65.6227.9337
Hanwha-Security.com

Hanwha Techwin Russia Office

Bolshaya Serpuhovskaya str., Moscow, Russia, 115093
Tel: +7.499.750.1730
Hanwha-Security.eu/ru/

Hanwha Techwin Vietnam Hanoi Office

28th Floor, Handico Building, Pham Hung Street, Me Tri ward,
Nam Tu Liem District, Hanoi City, Vietnam
Tel: +84.24.7100.0860
Hanwha-Security.com

Hanwha Techwin Ho Chi Minh Office

R. A1, 12th Floor, Minh Long tower, No.17 Ba Huyen Thanh Quan street,
Ward 6, District 3, Ho Chi Minh city, Vietnam
Tel: +84.28.7108.8860
Hanwha-Security.com

© 2021 Hanwha Techwin Co., Ltd. All rights reserved.

DESIGN AND SPECIFICATIONS ARE SUBJECT TO CHANGE WITHOUT NOTICE
Under no circumstances, this document shall be reproduced, distributed or changed,
partially or wholly, without formal authorization of Hanwha Techwin Co., Ltd.

REVISED 05-2021 (M.H)

AI based object search

Increase efficiency in video surveillance



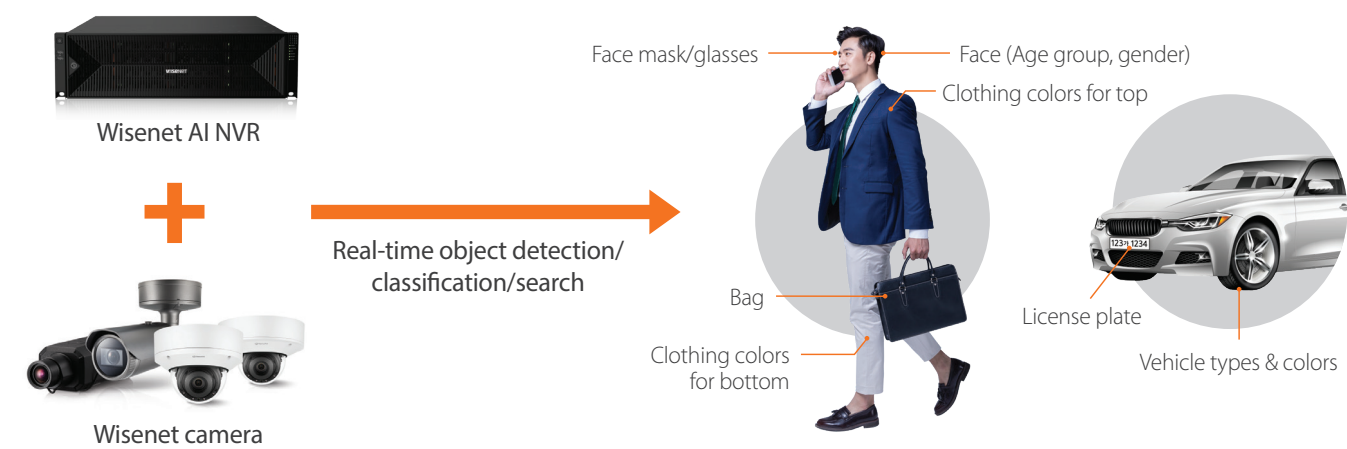
PRN-6400DB4/ 6400B4/3200B4

64CH/32CH AI network storage

- Video recording & playback in up to 8K (32MP) high resolution
- AI search (Bestshot, attribute)
- Large size storage of up to 16 SATA 160TB & simultaneous playback of all channels
- Easy channel/event/alarm configuration with preview
- Support Dynamic Event and Bookmark
- Easy connection to smartphones with QR codes & event alarms
- Dual SMPS (PRN-6400DB4)

AI enhances accuracy and efficiency

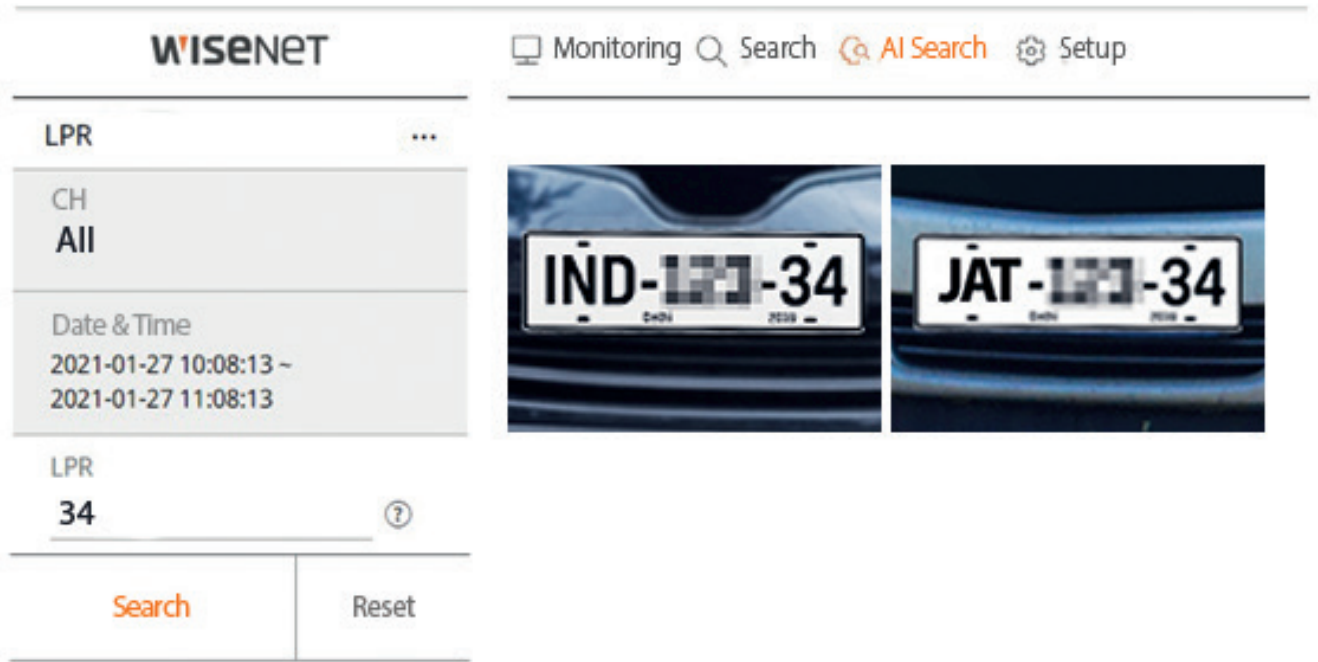
Wisenet AI NVR with AI algorithms provides accurate object detection/classification/search, increasing the efficiency of monitoring operation.



License Plate Recognition (LPR)

EThrough OCR (Optical Character Recognition) processing, the BestShot images of the license plates are converted into machine-readable text and numbers then stored in the Wisenet AI NVR in the form of digital data together with the images of license plates. Users can easily search license plates by typing in the numbers or characters of the license plate.

* Attributes : People (Clothing colors for top and bottom/Wearing or carrying a bag) / Face (Age group, gender, mask/glasses wearing) when integrated with Wisenet cameras Vehicle (Types, colors) / License plate (Optical technology converts images into texts for storage, supporting search in text



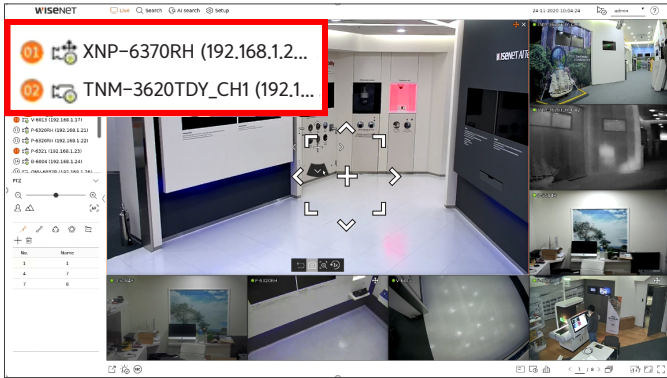
Timeline preview & easy channel, event and alarm configuration

When managing multi channels, the video recorder greatly improves efficiency in search by allowing users to preview images and video by simply hovering mouse cursor on the timeline. Users can configure event and alarm for all channels within a single page.

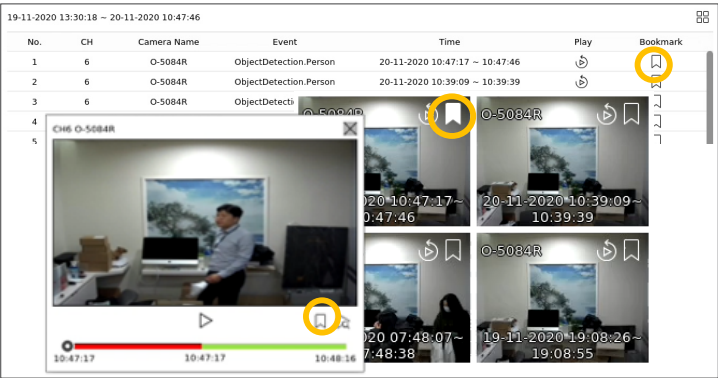


Live Monitoring & Bookmark

With Live Monitoring, users can configure the split mode as desired to view video footage in real time or find information such as system malfunction, overload or recording status for each channel. In the PTZ control mode, users can click arrow keys to move the PTZ in eight directions or zoom in to a certain area for more detailed monitoring. With Bookmark feature, users can designate up to 100 events for easy and quick event search.



Live monitoring & PTZ control



Bookmark & event search configuration

More reliable recording & storage

Hot Swap

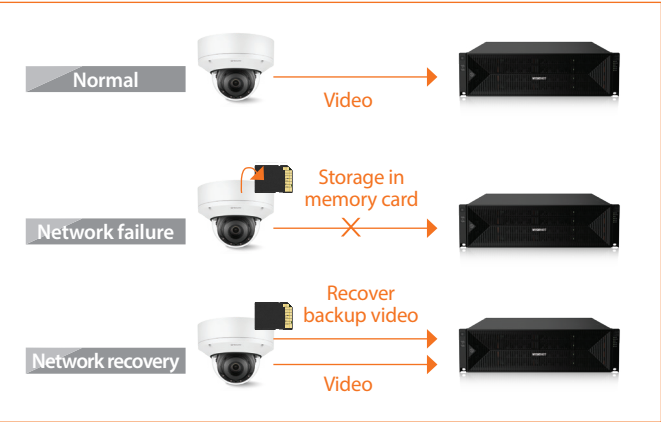
HDD can be replaced without shutting down the computer, uninterrupted the recording.

RAID 5/6

With RAID 5/6, data is split for storage, enabling data recovery in case of drive failure.

ARB(Auto Recovery Backup)

If there is a temporary network fault preventing the streaming of video, ARB recovers the images from cameras' SD cards.



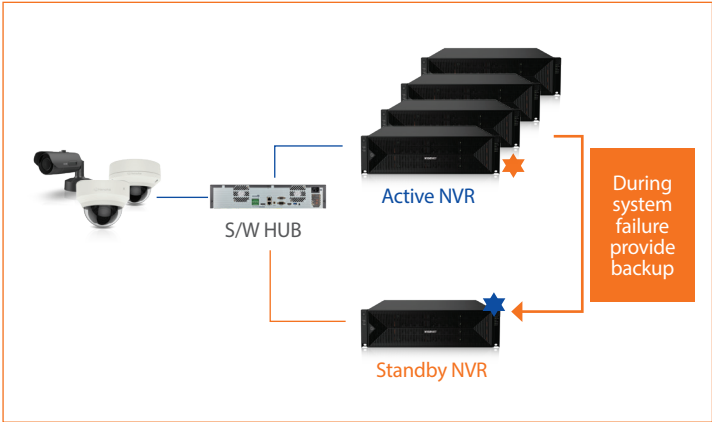
Installation Wizard for easy auto recognition and setup

Local/web based installation wizard with a single UI provides easy and quick auto camera recognition and registry as well as configuration of each channel.



N+1 Failover

In case the main NVR fails, the standby NVR can fill in to provide uninterrupted recording.



Easy installation & event push alarm

With QR codes in free Wisenet Mobile application, users can easily connect to video recorders without complex network settings. Event push alarms allow for swift identification and response to events at any time or any place.



Product Spec

	PRN-6400DB4 64CH AI NVR	PRN-6400B4 64CH AI NVR	PRN-3200B4 32CH AI NVR
Os	Linux		
Supported Compression	H.265, H.264, MJPEG, WiseStream		
Max. Recording Bit Rate	400Mbps		
Max # of Cameras	64CH	64CH	32CH
Network Camera Resolution	32MP ~ CIF		
HDD Slot	Up to 16 SATA (Max. 160TB)		
Record Mode	Normal, Dual Stream, Schedule (Continuous/Event), Event (Pre/Post), Bookmark		
Event Trigger	Alarm Input, Video Loss, Camera Event (Sensor, MD, Video Analytics, Defocus, Audio), Dynamic Event		
Event Action	e-Mail, Event Push, PTZ Preset, Alarm Out, Buzzer, Monitor Out		
External Storage	iSCSI		
RAID	RAID 5/6		
Hot Swap	Yes		
Network Viewer Software	SSM, Webviewer, Smart Viewer, Wisenet mobile Support SDK/CGI (SUNAPI) for integration to 3'rd party VMS		
Local Monitor	Support dual monitor HDMI 1 (Up to 4K), HDMI 2 (FHD)		
Network Camera Protocol	SUNAPI, ONVIF		
Power Input	100 ~ 240 VAC ±10%, 50/60 Hz (Dual SMPS)		100 ~ 240 VAC ±10%, 50/60 Hz
Power Consumption	Max. 265W (16 HDD)		
Additional Features	• LPR search (English, Numbers) • AI search attribute (Person, Vehicle, Licence plate) • N+1 failover supported • Bookmark supported • Simultaneous playback up to 112CH • PTZ camera configuration and control		

Dimensions

